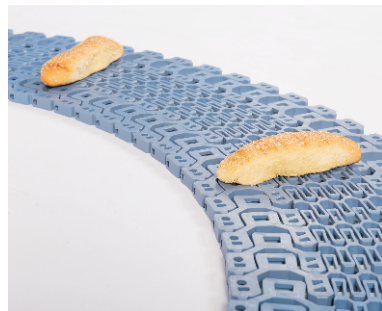
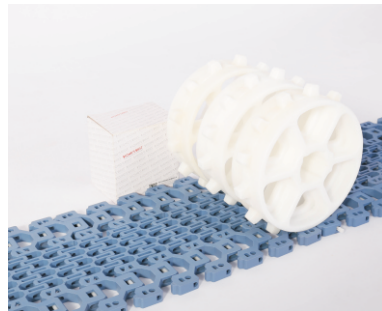
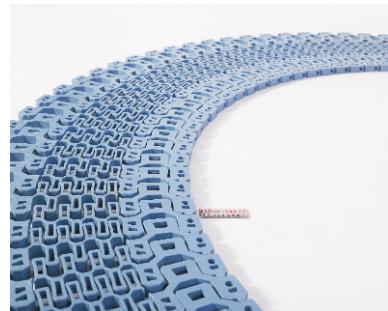
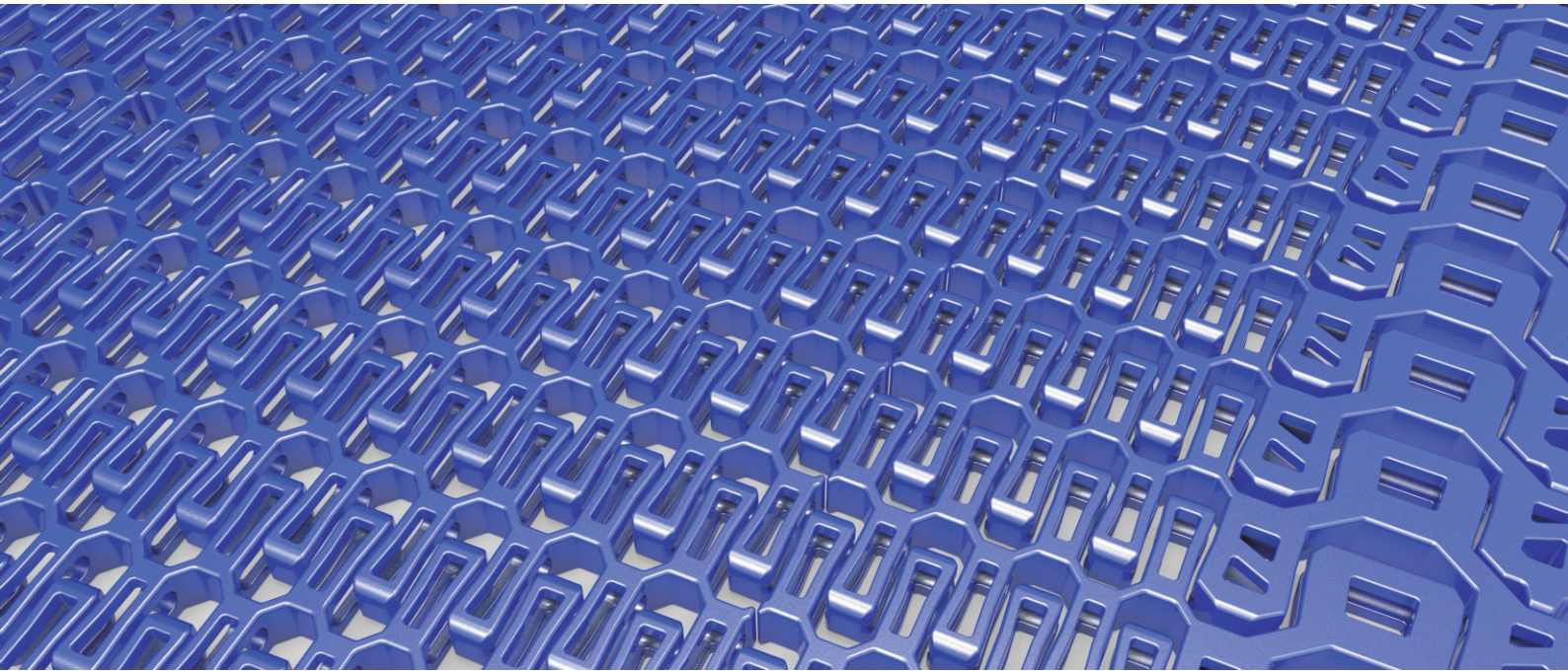
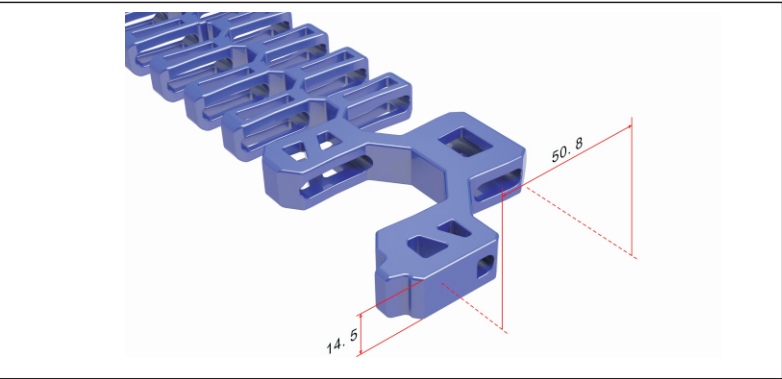


HS-1400B Technical Data Sheet



Pitch : 50.8mm
 Minimum Width : 253mm
 Open Area : 63%
 Approved : FDA
 Rod : Ø 5.8mm
 Flight : No
 Side Guard : No
 Curve : Yes



Data

| Belt Material | Belt Strength | | | | Temperature | | Belt Weight |
|---------------|---------------|---------|----------|---------|-------------|-----------|----------------------|
| | Straight | | Curve | | °C (min.) | °C (max.) | (Kg/M ²) |
| | Kg/M(BW) | N/M(BW) | Kg/M(BW) | N/M(BW) | | | |
| Acetal | 3400 | 34000 | 340 | 3400 | -40 | 80 | 8.7 |

BW – Belt Width

Color Table

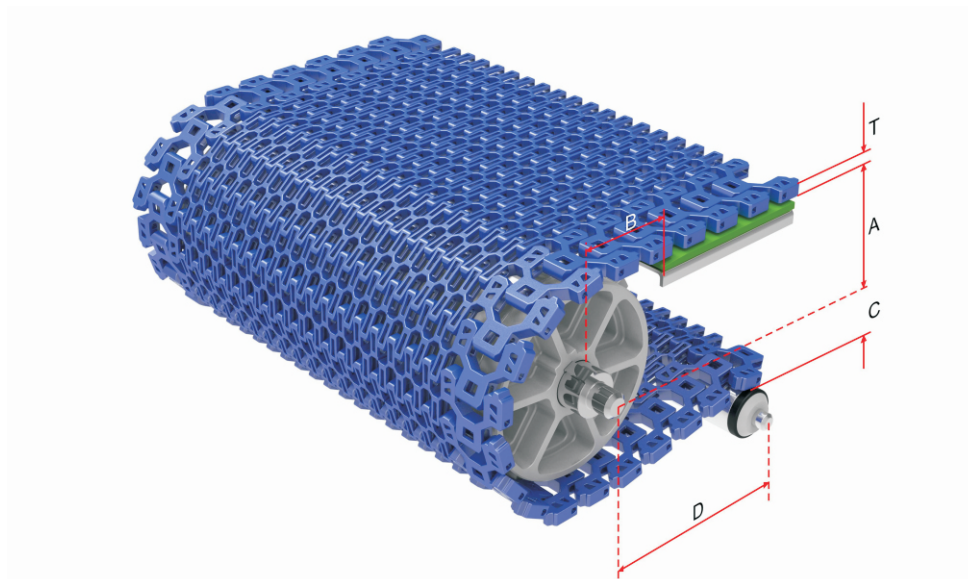
| Polypropylene | | | | | Polyethylene | | | | | Acetal | | | | | Nylon | | | | |
|---------------|---|---|----|---|--------------|---|---|----|---|--------|---|---|----|---|-------|---|---|----|---|
| W | G | N | DB | B | W | G | N | DB | B | W | G | N | DB | B | W | G | N | DB | B |
| ● | ● | | | | | | ● | | | ● | | | ● | ● | | | | | |

W-White, G-Gray, N-Nature, DB-Darkbrown, B-Blue

Friction Table

| Belt Material | Friction Wear strips & Products | | | | | | | |
|---------------|---------------------------------|------|-------|-------|------|---------|-----------|----------|
| | UHMW | HDPE | Steel | Glass | SUS | Plastic | Cardboard | Aluminum |
| Acetal | 0.11 | 0.09 | 0.27 | 0.16 | 0.26 | 0.15 | 0.19 | 0.28 |

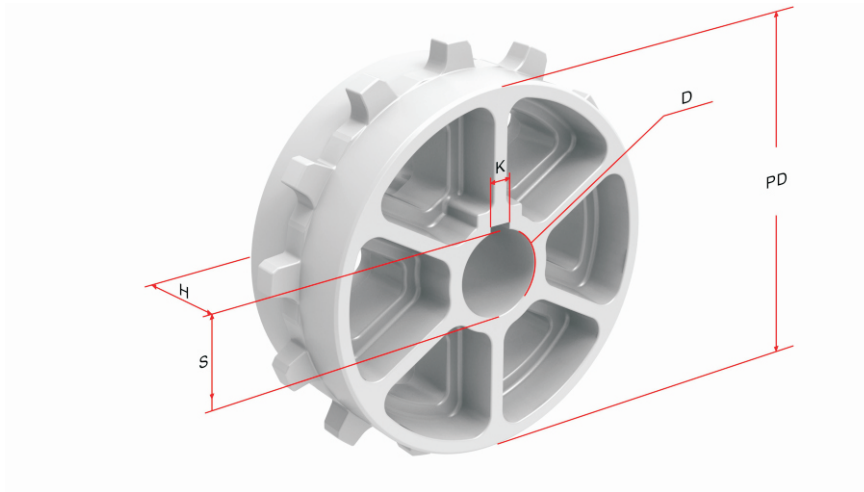
SUS – Stainless Steel



Conveyor Frame Dimensions

Unit : mm

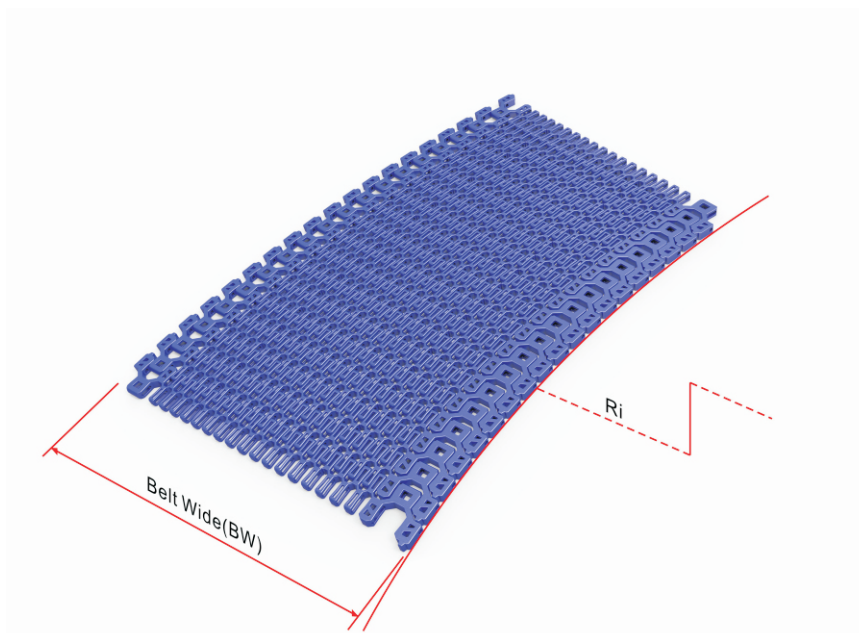
| No. Teeth | A (Min.) | B (Min.) | C (Max.) | D (Min.) | T |
|-----------|-----------|-----------|-----------|-----------|------|
| 13 | 102.25 | 119.5 | 99 | 250 | 14.5 |



Sprocket Dimensions

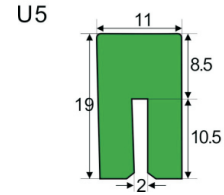
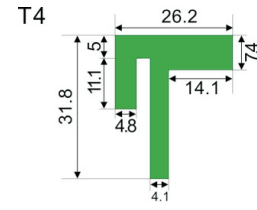
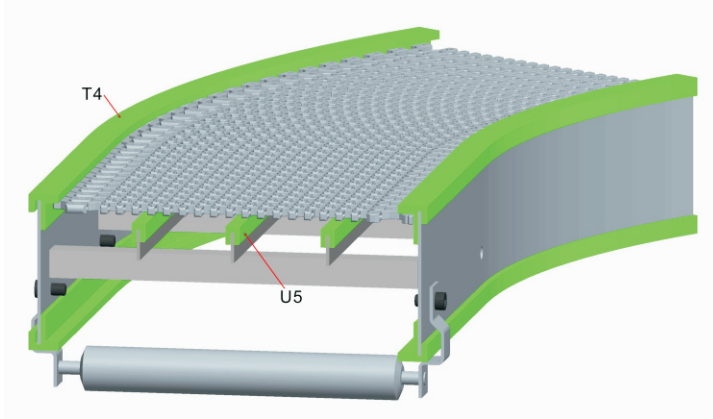
Unit: mm

| No. Teeth | PD | S | D | H | K |
|-----------|-----|-----------|----|------|-----|
| 13 | 219 | 38.5/40.5 | 45 | 76.2 | 8*8 |

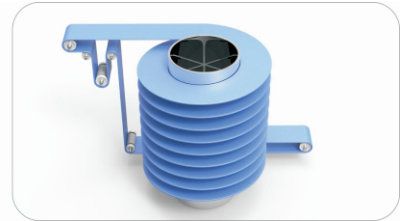
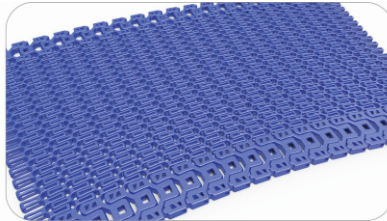
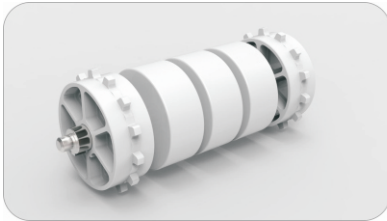


- ⌘ The minimum turning radius (inside) is 2 times of belt width under all feasible belt Width, 2.2 times of belt width is the most optimal.
- ⌘ The minimum straight run section near driving shaft and idling shaft of Radius belt must be 2 times of the belt width in length.
- ⌘ The minimum straight run section between two turns of opposing direction must be 2 times of the belt width in Length.

Guide Rail & Wear Strips



⌘ We have different kinds of guide rail and wear strips for your choice; for more information, please consult our sales team.



- A: Conveyor Belt
- B: Drive Sprocket
- C: Dancer Roller 200mm(min)
- D: Sprocket 150mm(min)
- $C=D_1=D_2$

